

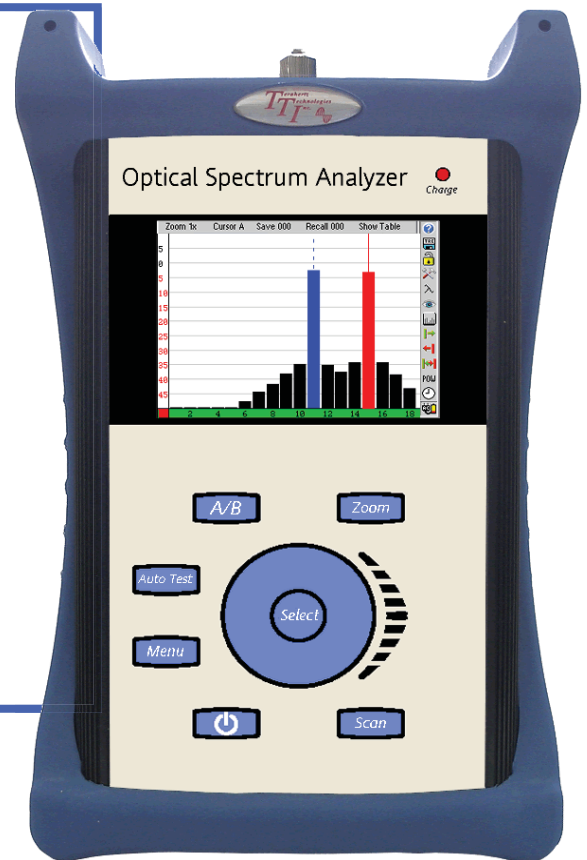
CWDM Channel Analyzer

F
T
E
8
0
0
0
C
W
D
M

Features:

- Pass/Fail Thresholds and Drift Statistics
- Available in 8 or 18 Channels
- Fast Real Time with <1/2 second Update
- Video Inspection capability
- Bar Graph and Table Displays
- Auto Test Zooms in on Active Channels
- Rugged Case w/Impact Resistant Boot
- Solid State Optics-No Moving Parts
- Easy Operation with Help Mode
- 4" Color Display
- 8hr Battery Life
- Impact Resistant Boot
- Stores 1000 test
- USB/PC and USB Flash ports

We also offer the FTE8000-C or - L DWDM Handheld Optical Spectrum Analyzer for DWDM network testing applications



The FTE-8000-CWDM is a simple to operate and affordable full featured CWDM Channel Analyzer. It is designed to be rugged and is well suited for use in the field. The FTE-8000 is available in 8 or 18 channels. The FTE8000-CWDM offers high end features such as Power Tilt and Gain Tilt. With its one button Auto Test feature, and a full set of selectable scale limits and thresholds, the FTE-8000-CWDM makes zeroing in on channel measurements easy. For flexibility the channel numbers are selected in wavelength or frequency and the information is displayed in graph or table mode on the 4 inch, high brightness color LCD. This unit allows users to set Pass/Fail thresholds and can store up to 1000 tests that can be downloaded via the USB PC or USB flash ports and documented with the included certification software for fast, easy reporting. Use the onboard Video Inspection Scope to ensure connector cleanliness prior to testing. The onboard Help system guides new users through operation and assists in parameter settings. The FTE-8000CWDM is housed in a rugged metal enclosure with a robust protective boot. To make transportation easy and save, a soft case with shoulder strap is available.



Made In the USA

Terahertz Technologies Inc.
169 Clear Rd, Oriskany NY 13424
Phone: 315-736-3642 Fax: 315-736-4078
email: sales@terahertztechnologies.com
web: www.terahertztechnologies.com

©07/2011 Terahertz Technologies Inc.

FTE-8000-CWDM Specifications:

FTE-8000CWDM*	
Wavelength Range	18 Channel 1271-1611nm 8 Channel 1471-1611nm
Channel Spacing	20nm
Channel Pass Band	±6.5nm
Channel Power Range	+5dBm to -50dBm
Absolute Accuracy	±1 dB
Max Composite Power	+23dBm
PDL	±0.2dB
Adjacent Channel Isolation	30dB
Measurement Time	< 1/2 Second
Readout Resolution	0.01dB
Return Loss	>40dB
Optical Interface	Universal UPC (FC/SC)
Graphical Display	Bar Graph and Table View
Display	4 in Color TFT
Dimensions	7.75 x 4.5 x 2.25 inches
Weight	2 lbs
Battery	Rechargeable NiMH - 8 hours operating time
Power	100-240 universal US, GB, EU, AU Mains
Environmental	Operation -10°C to 50°C
Accessories Included	Universal power supply with mains for US, UK, CE and AU. Interchangeable FC and SC adapters, Window's™ compatible software, USB cable, manual and rubber boot

TTI reserves the right to change specifications without notice.

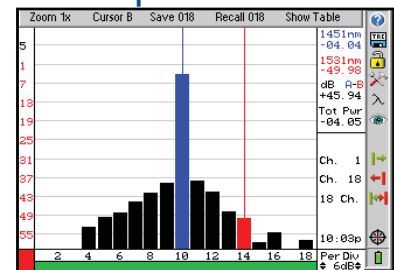
Ordering Information

FTE-8000CWDM	CWDM Channel Analyzer
FTE-8000CWDM-8	8 Channel CWDM Analyzer
FTE-SCASE-LG	Soft Case for FTE-6000, 7500 and 8000 Series

Table View

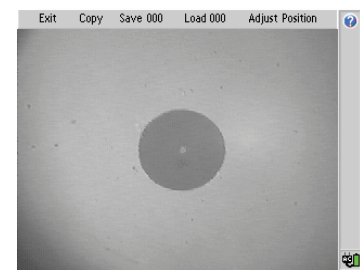
In the table view, the FTE-8000 displays failed channels in red and when a channel is highlighted, statistical information is displayed including the minimum, maximum and average power levels.

Graphical View



The FTE-8000-CWDM graph display can be configured to optimize the test view. The user can zoom in on specific channels, mark the display area in which channels meet power criteria and even limit the number of overall channels viewed.

Video Scope



The FTE-8000-CWDM will accommodate the TTI VP-100 Video Probe allowing the user to visually check connectors for cleanliness and damage prior to testing. This help eliminate costly repairs to the fiber optic connects on the FTE-8000 and results in more accurate tests.



Terahertz Technologies Inc.

169 Clear Rd, Oriskany NY 13424 - Phone: 315-736-3642 Fax: 315-736-4078
email: sales@terahertztechnologies.com - web: www.terahertztechnologies.com



Made In the USA

TTI makes every effort to insure all statements and information for the products referred to in this document are accurate and reliable. TTI can not accept any responsibility for errors, omissions or miss statements, nor can they accept responsibility for any actions taken based on the information demonstrated herein. TTI reserves the right to make changes of any kind to the product referred to in this document without prior notice.
© 07/2011 Terahertz Technologies Inc.